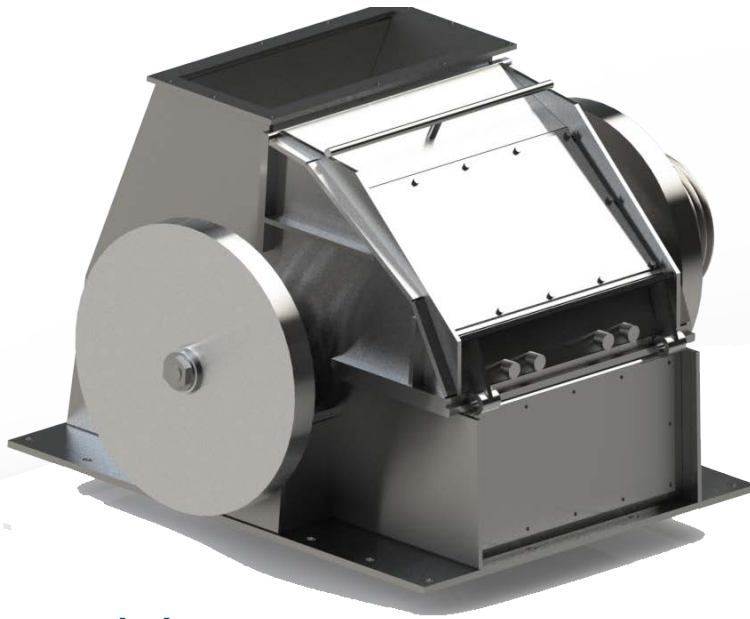




CRUSHER (TR-70)



ATEX SUITABLE

General Characteristics

Model	TR70
Production	40-50T/h (Hr<10%)
Power	110Kw
Infeed	455x1095 mm

Advantages

Equipped with two large flywheels that guarantee a smooth and silent operation, while stabilizing the power consumed. Depending on the model, they are equipped with two adjustable heat sources by means of armored tubular heaters located at the front or at the front and rear.

This prevents the shredded material from sticking to the surfaces, thus allowing to work at full capacity with material containing a high percentage of humidity.

- High granulometry reduction
- Exclusive internal heating system facilitating cleaning and avoiding clogging.
- Variation of granulometry according to customer's
- Compact and highly productive installations -

Sampling Normative

Some of these groups are:

1. American Society Testing and Materials (A.S.TM.)
2. International Organization Standardization (I.S.O.).
3. Japanese Industrial Standards (J.I.S.).
4. GOST Normative

CE Normative

This partly completed machine is in compliance with the following relevant provisions of the EC Directives: 2004/108/EC (EMC Directive).

The protection objectives of the Low Voltage Directive 2006/95/EC are in accordance with Annex I, No. 1.5.1 of the EC Machinery Directive 2006/42/EC.

The following standards have also been applied:

- EN ISO 12100-1:2003.
- EN ISO 12100-2:2003.
- EN ISO 13857:2008.
- And EN 619:2002.

