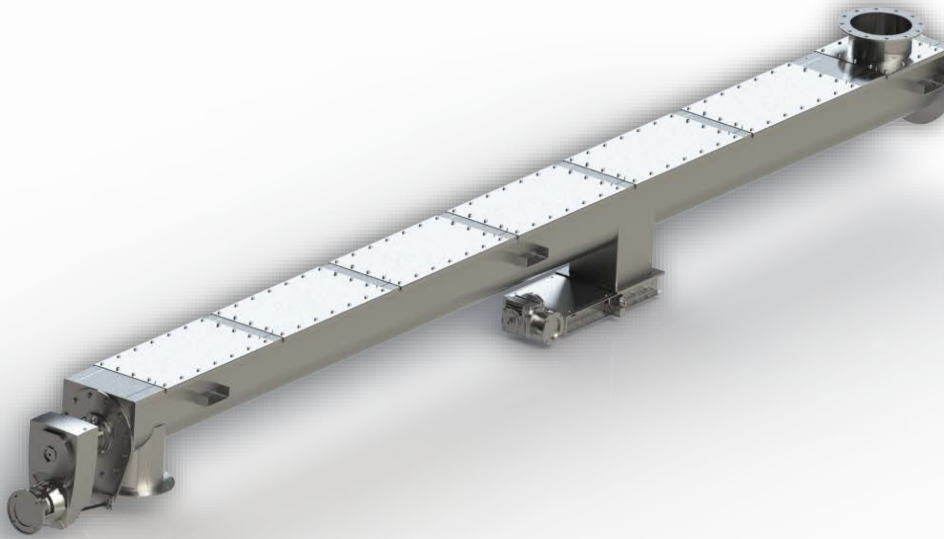


SCREW CONVEYOR (SCR)



ATEX SUITABLE

General Characteristics

Model	SCR
Lenght	3 to 10 Meters
Manufacturing	Steel, Satinless-steel, micro-painted
Gear Box	SEW, NORD or Similar

Advantages

Screw conveyors are used to transport bulk materials in horizontal, vertical, or diagonal directions. With a product specific design, customers receive a total solution that flawlessly connects to your process.

The configuration of a screw conveyor depends not only on the type of (bulk) material, but also on aspects such as moisture, temperature, ATEX risk zone as well as the actual process and mechanical requirements.

Our screw conveyors are for their reliability, improving uptime of the systems. The construction and parts have proven their sturdiness over the years while features such as wear resistance, corrosion protection or intermediate bearings prolong the service life. In this way.

Sampling Normative

Sorne of these groups are:

1. American Society Testing and Materials (A.S.TM.)
2. International Organization Standardization (I.S.O.).
3. Japanese Industrial Standards (J.I.S.).
4. GOST Normative

CE Normative

This partly completed machine is in compliance with the following relevant provisions of the EC Directives: 2004/108/EC (EMC Directive).

The protection objectives of the Low Voltage Directive 2006/95/EC are in accordance with Annex I, No. 1.5.1 of the EC Machinery Directive 2006/42/EC.

The following standards have also been applied:

- EN ISO 12100-1:2003.
- EN ISO 12100-2:2003.
- EN ISO 13857:2008.
- And EN 619:2002.

