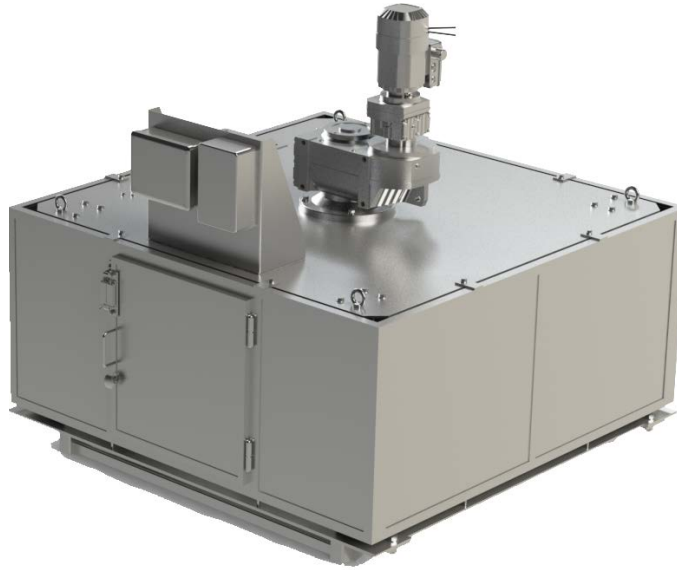


## ROTARY COLLECTOR FOR CANISTERS (RSCO-8)



ATEX SUITABLE

### General Characteristics

<b>Model</b>	RSCO-8
<b>Canisters</b>	8 Units
<b>Capacity</b>	5-30 Liters
<b>Gear Box</b>	SEW, NORD or Similar

### Advantages

The sample bottles are placed in a roundabout and are turned to the next empty bottle when filled. System is equipped with a door security Switch, canister detector, and completely automated equipment.

High performance for secure moisture into the canisters.

Completely motorized system

In the extensive range, you will find machinery and devices for transporting the samples, such as space-saving and encapsulated special belts, for screen analysis, drum tests, and further laboratory instruments for preparing the obtained samples for analysis.

### Sampling Normative

Some of these groups are:

1. American Society Testing and Materials (A.S.TM.)
2. International Organization Standardization (I.S.O.).
3. Japanese Industrial Standards (J.I.S.).
4. GOST Normative

### CE Normative

This partly completed machine is in compliance with the following relevant provisions of the EC Directives: 2004/108/EC (EMC Directive).

The protection objectives of the Low Voltage Directive 2006/95/EC are in accordance with Annex I, No. 1.5.1 of the EC Machinery Directive 2006/42/EC.

The following standards have also been applied:

EN ISO 12100-1:2003.

EN ISO 12100-2:2003.

EN ISO 13857:2008.

And EN 619:2002.

