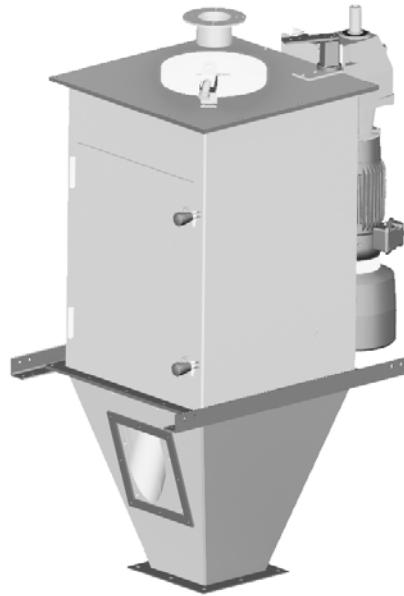


ROTARY DIVIDER (CSA-3500-1S)



ATEX SUITABLE

General Characteristics

Model	CSA-3500
Electrical	230 – 400VAC, 50Hz
Extraction	1 Extraction port disponible
Gear Box	SEW, NORD or Similar

Advantages

The Stand Alone Rotating Sample Divider is designed to split out a representative portion of a sample with a high degree of dividing accuracy

The main features include accurate representative split of any proportion (from 2% - 50%), as well as sealed bearings.

The feed sample is fed at a controlled rate as a falling stream that is divided either into one part or into equal segments by the action of a "circle" of segmental buckets being rotated beneath the stream.

The unit operates in accordance with internationally recognised sampling protocols.

Sampling Normative

Some of these groups are:

1. American Society Testing and Materials (A.S.TM.)
2. International Organization Standardization (I.S.O.).
3. Japanese Industrial Standards (J.I.S.).
4. GOST Normative

CE Normative

This partly completed machine is in compliance with the following relevant provisions of the EC Directives: 2004/108/EC (EMC Directive).

The protection objectives of the Low Voltage Directive 2006/95/EC are in accordance with Annex I, No. 1.5.1 of the EC Machinery Directive 2006/42/EC.

The following standards have also been applied:

EN ISO 12100-1:2003.

EN ISO 12100-2:2003.

EN ISO 13857:2008.

And EN 619:2002.

