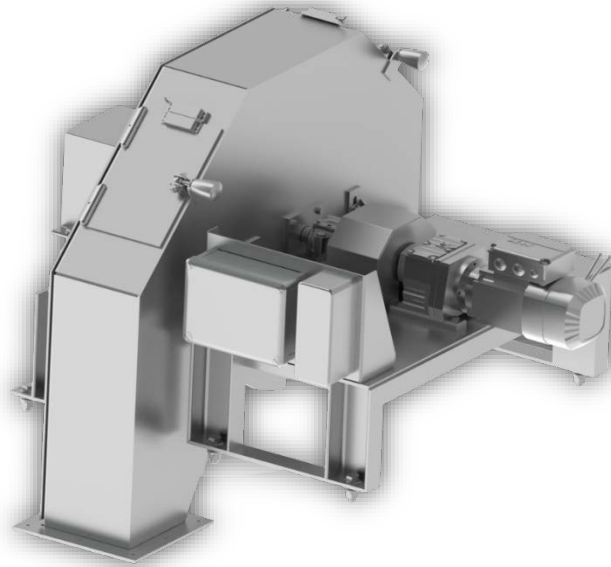


SWEEP SAMPLERS – SECONDARY SAMPLER SYSTEMS (SSS)



ATEX SUITABLE

General Characteristics

Model	SSS
Width Belt	400, 500, 600, 800mm
Cutter Width	Modular, depending Final sample per lot
Gear Box	SEW, NORD or Similar

Advantages

Model SSS machine is ideally suited for sampling of coal, limestone, sand, crushed rock, gravel, ferrous and non-ferrous ores as a Secondary Sampler. Because of installation ease, the sweep type sampler is easily retrofitted to existing bulk material conveyor systems. Backed with over 40 years of experience in engineering and manufacturing, our sampling systems are recognized worldwide

- **Compact design**
- **Normally Installed in CTAR Conveyors**
- **Direct Drive for positive Stopping**
- **Cost efficient**
- **Replaceable Steel Brushes**
- **Skirtboards on sampler prevent material**

Sampling Normative

Some of these groups are:

1. American Society for Testing and Materials (A.S.TM.).
2. International Organization for Standardization (I.S.O.).
3. Japanese Industrial Standards (J.I.S.).
4. GOST Normative

CE Normative

This partly completed machine is in compliance with the following relevant provisions of the EC Directives: 2004/108/EC (EMC Directive).

The protection objectives of the Low Voltage Directive 2006/95/EC are in accordance with Annex I, No. 1.5.1 of the EC Machinery Directive 2006/42/EC.

The following standards have also been applied:

EN ISO 12100-1:2003.

EN ISO 12100-2:2003.

EN ISO 13857:2008.

And EN 619:2002.

